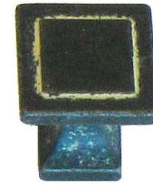




G.6541/160.00C2	160	180	26



G.1150/100C2	-	24	24



G.6541/160.00T4	160	180	26
G.6541/096.00T4	96	113	24



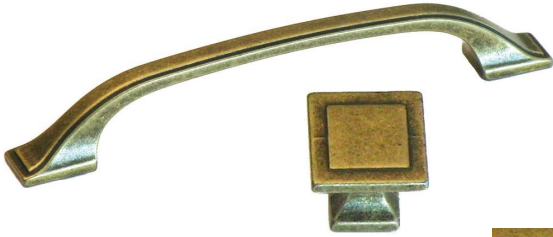
G.6017/1.0AT4	-	36	24



G.6541/160.00T5	160	180	26
G.6541/096.00T5	96	113	24



G.6017/1.0AT5	-	36	24



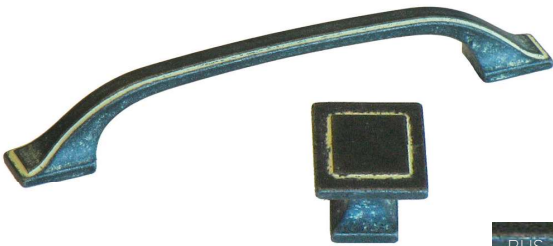
SBR

G.2311/128.00D1	128	156	25
G.1150/1.00D1	-	24	24



17

C.1348/192.17	192/160	205	27



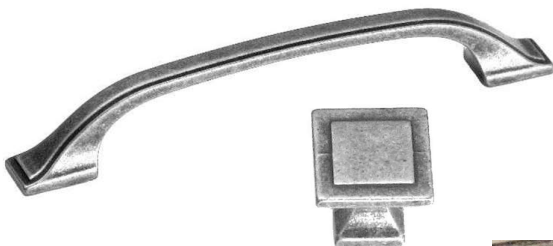
RUS

G.2311/128.00C2	128	156	25
G.2311/096.00C2	96	124	25
G.1150/1.00C2	-	24	24



53

ME.3910/128.53	128	147	39
ME.3911/64.53	64	84	37



E8

G.2311/128.00E8	128	156	25
G.1150/1.00E8	-	24	24



49

59

ME.3939/16.49	16	32	31
ME.3939/16.59	16	32	31