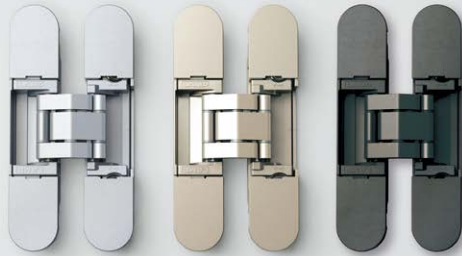


3-WAY ADJUSTABLE CONCEALED HINGE



HES3D-90



HINGES

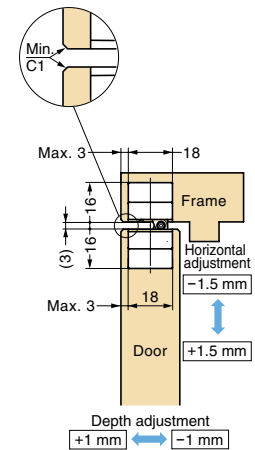
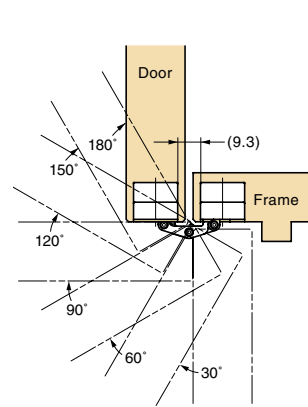
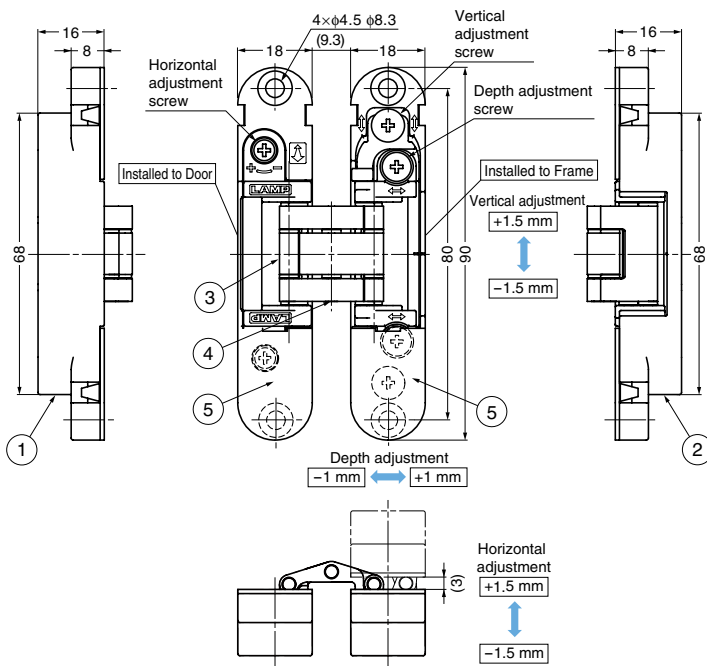
3-WAY ADJUSTABLE CONCEALED HINGE

Features

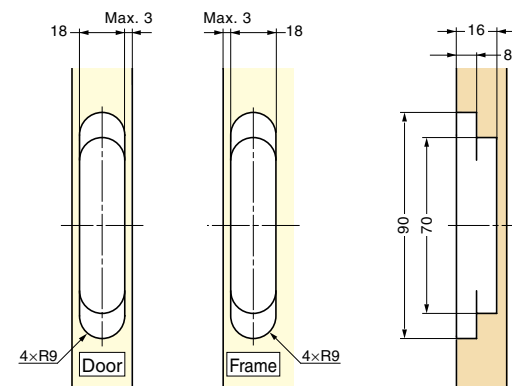
- Thin profile allows for shallow mortise and makes installation easier
- Jig (sold separately) makes installation easy
- Vertical, horizontal and depth adjustment possible post-installation (3way)
- Can be split into two parts (one for the frame and one for the flap) making installation easy
- Custom colors available on request. Please contact us for details.
- Minimum door thickness: 23mm
- Max door width: 600mm
- Max door height: 1500mm (Can be used on taller doors if weight is within specifications)
- Can be used with DC-200 damper catch but can not be used with lid stays or other door damper.

Parts Included

- Countersunk head screw 4x20 (4 pcs./hinge)
- Hexagonal spanner x2



Cut Out Dimensions



No.	Part Name	Material	Finish		
			DC	DN	BL
①	Body	Zinc Alloy (ZDC)	Satin Chrome	Satin Nickel	Black
②	Base Frame	Zinc Alloy (ZDC)	Satin Chrome	Satin Nickel	Black
③	Arm	Zinc Alloy (ZDC)	Satin Chrome	Satin Nickel	Black
④	Shaft	Stainless Steel	-	-	-
⑤	Cover	ABS	Satin Chrome	Satin Nickel	Black

Item Code	Item Name	Colour	Door Width	Door Height	Door Thickness	Door Weight		Opening Angle	Weight	Box	Carton
170-029-221	HES3D-90DC	Silver	Max. 600	Max. 1500	Min. 23	Max. 12 kg/2 pcs	Max. 16 kg/3 pcs	180°	198 g	2 pcs	48 pcs
170-029-222	HES3D-90DN	Champagne Gold	Max. 600	Max. 1500	Min. 23	Max. 12 kg/2 pcs	Max. 16 kg/3 pcs	180°	198 g	2 pcs	48 pcs
170-033-588	HES3D-90BL	Black	Max. 600	Max. 1500	Min. 23	Max. 12 kg/2 pcs	Max. 16 kg/3 pcs	180°	198 g	2 pcs	48 pcs

