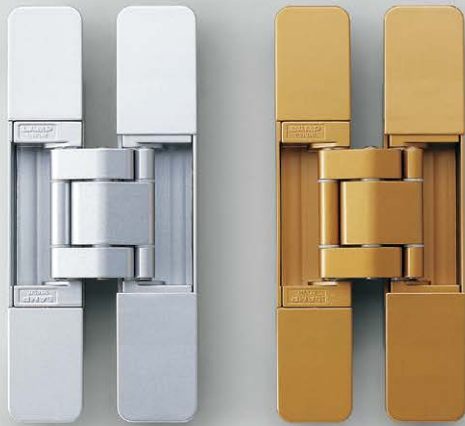


3-WAY ADJUSTABLE CONCEALED HINGE



HES3D-160



HINGES

Features

- Thin profile allows for shallow mortise and makes installation easier
- Jig (sold separately) makes installation easy.
- Vertical, horizontal and depth adjustment possible post-installation (3way).
- Temporary holding feature: can temporarily be hung and hold position without being affixed with screws. This makes installation much easier.
- Passed a 300,000 open/close cycle test in private testing.
- Max door weight: 45kg/2pc, 60kg/3pc
- Min. door thickness: 35mm
- Max door width: 900mm
- Max door height: 2400mm (recommended. Larger doors can be used if the weight is within specification)

Remarks

Recommend to use with bellow door closer/ damper as bellow.

- LAPCON DOOR DAMPER LDD-S (P.720-721)
- LAPCON DOOR DAMPER LDD-V (P.718)
- LAPCON DOOR DAMPER LDC-N2 (P.722-724)

*For using stopper function of LDC, please install door holder separately at the stop position.

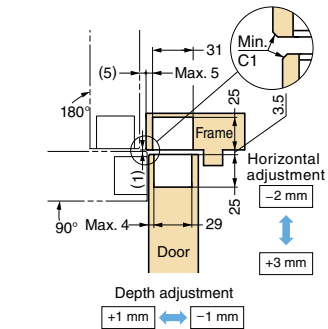
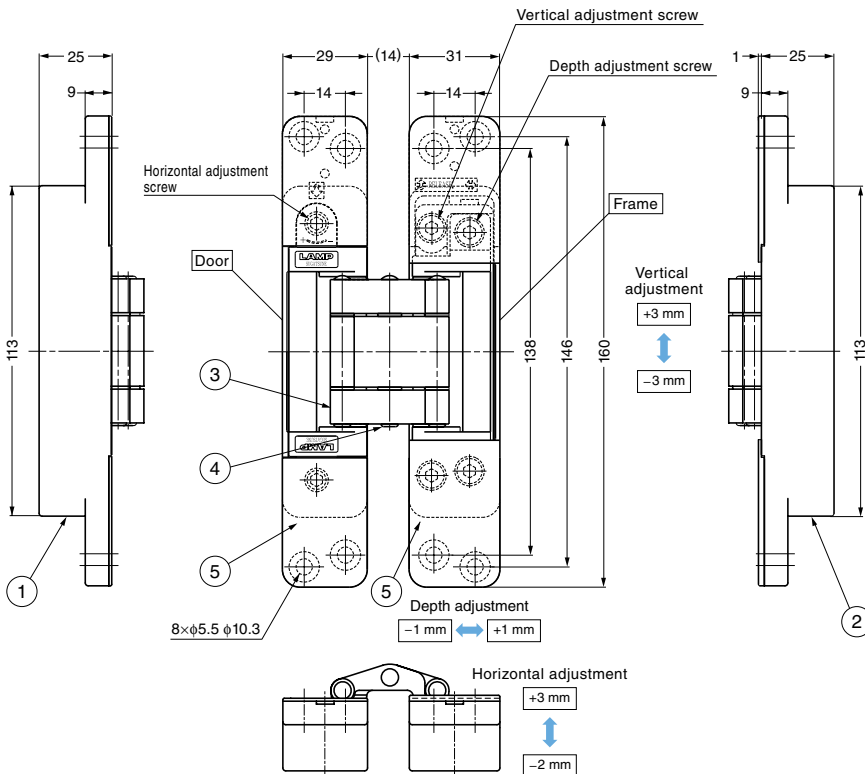
Parts Included

- Countersunk head wood screw 4.8x25
- Hex. wrench (a nominal diameter 4)

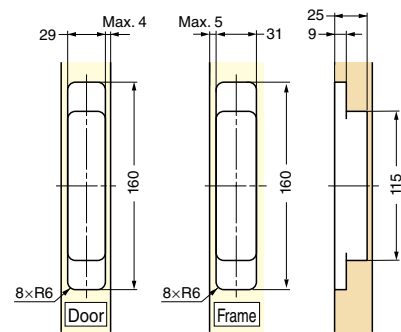
Sold Separately

Installation template HES3D-160-TMP (P.474)

3-WAY ADJUSTABLE CONCEALED HINGE



Cut Out Dimensions



| No. | Part Name | Material | Finish | |
|-----|-----------------|------------------|--------------|------------|
| | | | SL | GL |
| ① | Body | Zinc Alloy (ZDC) | Silver | Gold |
| ② | Base Frame | Zinc Alloy (ZDC) | Silver | Gold |
| ③ | Arm | Zinc Alloy (ZDC) | Silver | Gold |
| ④ | Shaft | Stainless Steel | - | - |
| ⑤ | Cover (2 pairs) | ABS | Paint/Silver | Paint/Gold |



| Item Code | Item Name | Colour | Door Width | Door Height | Door Thickness | Door Weight | | Opening Angle | Weight | Box | Carton |
|-------------|-------------|--------|------------|-------------|----------------|------------------|------------------|---------------|--------|-------|--------|
| 170-091-009 | HES3D-160SL | Silver | Max. 900 | Max. 2400 | Min. 35 | Max. 45 kg/2 pcs | Max. 60 kg/3 pcs | 180° | 756 g | 2 pcs | 12 pcs |
| 170-091-010 | HES3D-160GL | Gold | Max. 900 | Max. 2400 | Min. 35 | Max. 45 kg/2 pcs | Max. 60 kg/3 pcs | 180° | 756 g | 2 pcs | 12 pcs |